

## Fauna Potentially and Known to Occur Within the Study Area

Common Name	Scientific Name	Observed within the Study Area
<b><i>Reptiles</i></b>		
desert tortoise	<i>Xerobates (=Gopherus) agassizii</i>	X
banded gecko	<i>Coleonyx variegatus</i>	
desert iguana	<i>Dipsosaurus dorsalis</i>	X
chuckwalla	<i>Sauromalus obesus</i>	X
zebra-tailed lizard	<i>Callisaurus draconoides</i>	X
Mojave fringe-toed lizard	<i>Uma scoparia</i>	X
Desert collared lizard	<i>Crotaphytus insularis</i>	X
long-nosed leopard lizard	<i>Gambelia wislizenii</i>	X
desert spiny lizard	<i>Sceloporus magister</i>	X
western fence lizard	<i>Sceloporus occidentalis</i>	
side-blotched lizard	<i>Uta stansburiana</i>	X
long-tailed brush lizard	<i>Urosaurus graciosus</i>	
desert horned lizard	<i>Phrynosoma platyrhinos</i>	X
common night lizard	<i>Xantusia vigilis</i>	X
Mojave black-collared lizard	<i>Crotaphytus bicinctores</i>	
western whiptail	<i>Cnemidophorus tigris</i>	X
western blind snake	<i>Leptotyphlops humilis</i>	
rosy boa	<i>Lichanura trivirgata</i>	
Spotted leaf-nosed snake	<i>Phyllorhynchus decurtatus</i>	
Coachwhip	<i>Masticophis flagellum</i>	X
western patch-nosed snake	<i>Salvadora hexalepis</i>	X
glossy snake	<i>Arizona elegans</i>	
Ground snake	<i>Sonora semiannulata</i>	

Common Name	Scientific Name	Observed within the Study Area
gopher snake	<i>Pituophis melanoleucus</i>	X
common kingsnake	<i>Lampropeltis getulus</i>	
long-nosed snake	<i>Rhinocheilus lecontei</i>	
western shovel-nosed snake	<i>Chionactis occipitalis</i>	X
desert night snake	<i>Hypsiglena torquata</i>	
Mojave green rattlesnake	<i>Crotalus scutulatus</i>	X
Sidewinder	<i>Crotalus cerastes</i>	X
lyre snake	<i>Trimorphodon biscutatus</i>	
Mojave rattlesnake	<i>Crotalus scutulatus</i>	
<b><i>Birds</i></b>		
pied-billed grebe	<i>Podilymbus podiceps</i>	
horned grebe	<i>Podiceps auritus</i>	
eared grebe	<i>Podiceps nigricollis</i>	
American white pelican	<i>Pelecanus erythrorhynchos</i>	
great blue heron	<i>Ardea herodias</i>	
great egret	<i>Casmerodius albus</i>	
snowy egret	<i>Egretta thula</i>	
cattle egret	<i>Bubulcus ibis</i>	
green-backed heron	<i>Butorides striatus</i>	
black-crowned night heron	<i>Nycticorax nycticorax</i>	
white-faced ibis	<i>Plegadis chihi</i>	
Canada goose	<i>Branta canadensis</i>	
wood duck	<i>Aix sponsa</i>	
green-winged teal	<i>Anas crecca</i>	
mallard	<i>Anas platyrhynchos</i>	
northern pintail	<i>Anas acuta</i>	

Common Name	Scientific Name	Observed within the Study Area
blue-winged teal	<i>Anas discors</i>	
cinnamon teal	<i>Anas cyanoptera</i>	
northern shoveler	<i>Anas clypeata</i>	
gadwall	<i>Anas strepera</i>	
American widgeon	<i>Anas americana</i>	
canvasback	<i>Aythya valisineria</i>	
redhead	<i>Aythya americana</i>	
ring-necked duck	<i>Aythya collaris</i>	
lesser scaup	<i>Aythya affinis</i>	
bufflehead	<i>Bucephala albeola</i>	
red-breasted merganser	<i>Mergus serrator</i>	
ruddy duck	<i>Oxyura jamaicensis</i>	
turkey vulture	<i>Cathartes aura</i>	
osprey	<i>Pandion haliaetus</i>	
northern harrier	<i>Circus cyaneus</i>	X
sharp-shinned hawk	<i>Accipiter striatus</i>	
Cooper's hawk	<i>Accipiter cooperii</i>	
red-tailed hawk	<i>Buteo jamaicensis</i>	X
Swainson's hawk	<i>Buteo swainsoni</i>	
ferruginous hawk	<i>Buteo regalis</i>	
golden eagle	<i>Aquila chrysaetos</i>	
American kestrel	<i>Falco sparverius</i>	
peregrine falcon	<i>Falco peregrinus anatum</i>	
prairie falcon	<i>Falco mexicanus</i>	
chukar	<i>Alectoris chukar</i>	
Gambel's quail	<i>Callipepla gambelii</i>	X

Common Name	Scientific Name	Observed within the Study Area
California quail	<i>Callipepla californica</i>	
California black rail	<i>Laterallus jamaicensis coturniculus</i>	
Virginia rail	<i>Rallus limicola</i>	
Sora rail	<i>Porzana carolina</i>	
American coot	<i>Fulica americana</i>	
Killdeer	<i>Charadrius vociferus</i>	S
semipalmated plover	<i>Charadrius semipalmatus</i>	
black-necked stilt	<i>Himantopus mexicanus</i>	X
American avocet	<i>Recurvirostra americana</i>	X
greater yellowlegs	<i>Tringa melanoleuca</i>	
lesser yellowlegs	<i>Tringa flavipes</i>	
solitary sandpiper	<i>Tringa solitaria</i>	
spotted sandpiper	<i>Actitis macularia</i>	
western sandpiper	<i>Calidris mauri</i>	
least sandpiper	<i>Calidris minutilla</i>	
dunlin	<i>Calidris alpina</i>	
long-billed dowitcher	<i>Limnodromus scolopaceus</i>	
common snipe	<i>Gallinago gallinago</i>	
Wilson's phalarope	<i>Phalaropus tricolor</i>	
red-necked phalarope	<i>Phalaropus lobatus</i>	
Franklin's gull	<i>Larus pipixcan</i>	
Bonaparte's gull	<i>Larus philadelphia</i>	
ring-billed gull	<i>Larus delawarensis</i>	
California gull	<i>Larus californicus</i>	
yellow-footed gull	<i>Larus livens</i>	
Foster's tern	<i>Sterna fosteri</i>	

Common Name	Scientific Name	Observed within the Study Area
black tern	<i>Chlidonias niger</i>	
rock dove	<i>Columba livia</i>	
ringed turtle-dove	<i>Streptopelia risoria</i>	
white-winged dove	<i>Zenaida asiatica</i>	
mourning dove	<i>Zenaida macroura</i>	X
greater roadrunner	<i>Geococcyx californianus</i>	X
common barn-owl	<i>Tyto alba</i>	X
short-eared owl	<i>Asio flammeus</i>	
long-eared owl	<i>Asio otus</i>	
great horned owl	<i>Bubo virginianus</i>	
burrowing owl	<i>Athene cunicularia</i>	X
lesser nighthawk	<i>Chordeiles acutipennis</i>	X
common poorwill	<i>Phalaenoptilus nuttalli</i>	X
white-throated swift	<i>Aeronautes saxatalis</i>	X
Vaux's swift	<i>Chaetura vauxi</i>	
Costa's hummingbird	<i>Calypte costae</i>	
black-chinned hummingbird	<i>Archilochus alexandri</i>	
rufous hummingbird	<i>Selasphorus rufus</i>	
belted kingfisher	<i>Ceryle alcyon</i>	
acorn woodpecker	<i>Melanerpes formicivorus</i>	
ladder-backed woodpecker	<i>Picoides scalaris</i>	
Gila woodpecker	<i>Melanerpes uropygialis</i>	
northern flicker	<i>Colaptes auratus</i>	
western kingbird	<i>Tyrannus verticalis</i>	X
ash-throated flycatcher	<i>Myiarchus cinerascens</i>	X
southwestern willow flycatcher	<i>Empidonax traillii extimus</i>	

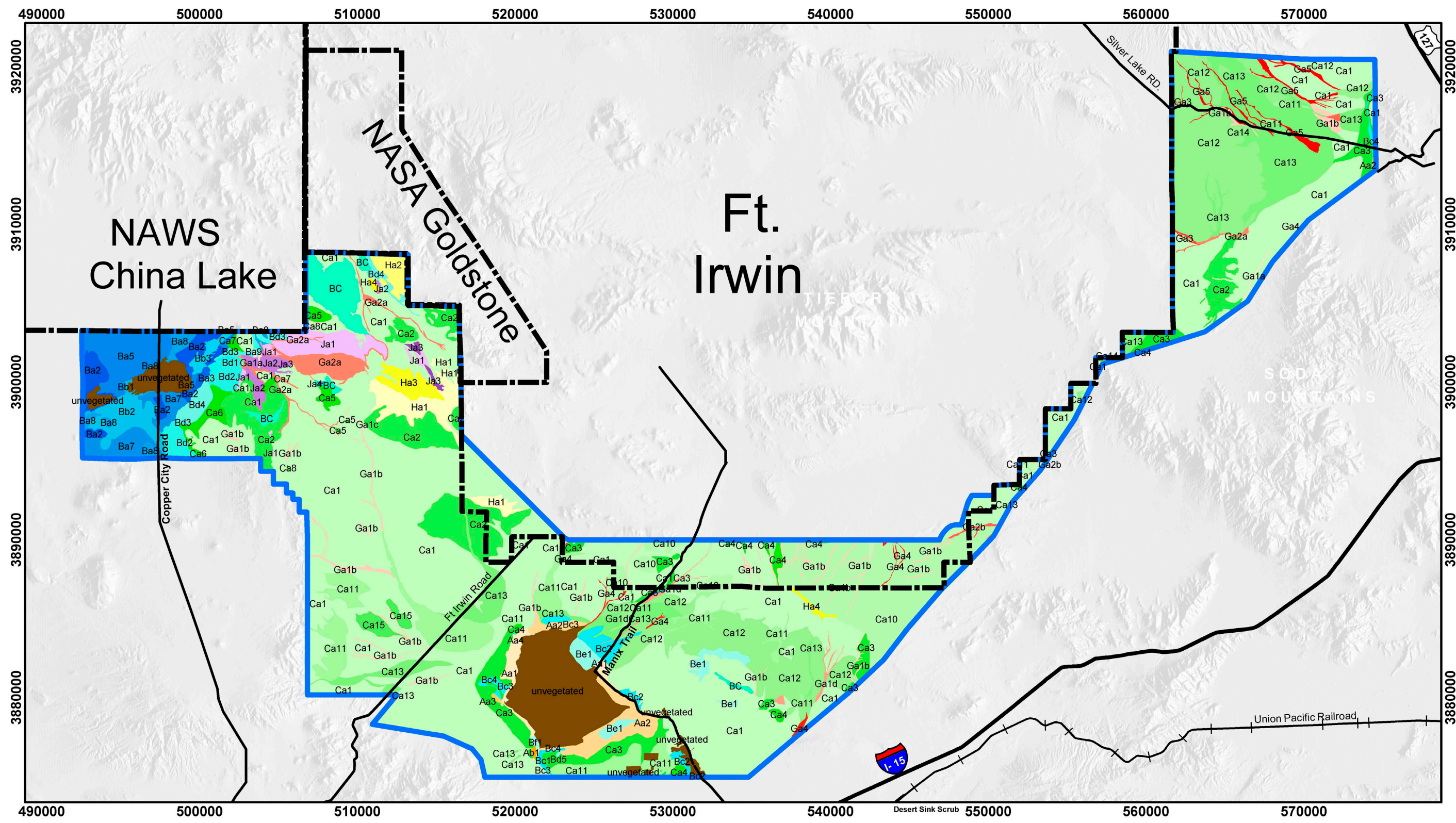
Common Name	Scientific Name	Observed within the Study Area
willow flycatcher	<i>Empidonax traillii</i>	
vermillion flycatcher	<i>Pyrocephalus rubinus</i>	
western wood-pewee	<i>Contopus cordidulus</i>	
Say's phoebe	<i>Sayornis saya</i>	X
black phoebe	<i>Sayornis nigricans</i>	X
olive-sided flycatcher	<i>Contopus borealis</i>	
Cassin's kingbird	<i>Tyrannus vocierans</i>	
horned lark	<i>Eremophila alpestris</i>	X
barn swallow	<i>Hirundo rustica</i>	X
cliff swallow	<i>Hirundo pyrrhonata</i>	X
violet-green swallow	<i>Tachycineta thalassina</i>	
northern rough-winged swallow	<i>Stelgidopteryx serripennis</i>	
tree swallow	<i>Tachycineta bicolor</i>	
common raven	<i>Corvus corax</i>	X
verdin	<i>Auriparus flaviceps</i>	
red-breasted nuthatch	<i>Sitta canadensis</i>	
Bewick's wren	<i>Thryomanes bewickii</i>	
rock wren	<i>Salpinctes obsoletus</i>	X
cactus wren	<i>Campylorhynchus brunneicapillus</i>	X
canyon wren	<i>Catherpes mexicanus</i>	X
house wren	<i>Troglodytes aedon</i>	
marsh wren	<i>Cistothorus palustris</i>	
ruby-crowned kinglet	<i>Regulus calendula</i>	
blue-gray gnatcatcher	<i>Polioptila caerulea</i>	
black-tailed gnatcatcher	<i>Polioptila melanura</i>	X
mountain bluebird	<i>Sialic currucoides</i>	

Common Name	Scientific Name	Observed within the Study Area
Townsend's solitaire	<i>Myadestes townsendi</i>	X
hermit thrush	<i>Catharus guttatus</i>	
Swainson's thrush	<i>Catharus ustulatus</i>	
American robin	<i>Turdus migratorius</i>	
northern mockingbird	<i>Mimus polyglottos</i>	X
LeConte's thrasher	<i>Toxostoma lecontei</i>	X
Bendire's thrasher	<i>Toxostoma bendirei</i>	X
crissal thrasher	<i>Toxostoma dorsale</i>	
sage thrasher	<i>Oreoscoptes montanus</i>	
water pipit	<i>Anthus spinoletta</i>	
cedar waxwing	<i>Bombycilla cedrorum</i>	
phainopepla	<i>Phainopepla nitens</i>	X
loggerhead shrike	<i>Lanius ludovicianus</i>	X
European starling	<i>Sturnus vulgaris</i>	
solitary vireo	<i>Vireo solitarius</i>	
Hutton's vireo	<i>Vireo huttoni</i>	
warbling vireo	<i>Vireo gilvus</i>	
least Bell's vireo	<i>Vireo bellii pusillus</i>	X
gray vireo	<i>Vireo vicinior</i>	
Virginia's warbler	<i>Vermivora virginiae</i>	
Townsend's warbler	<i>Dendroica townsendi</i>	
MacGillivray's warbler	<i>Oporornis tolmiei</i>	
yellow-rumped warbler	<i>Dendroica coronata</i>	X
yellow warbler	<i>Dendroica petechia</i>	
orange-crowned warbler	<i>Vermivora celata</i>	X
yellow-breasted chat	<i>Icteria virens</i>	

Common Name	Scientific Name	Observed within the Study Area
common yellowthroat	<i>Geothlypis trichas</i>	
Wilson's warbler	<i>Wilsonia pusilla</i>	
hermit warbler	<i>Dendroica occidentalis</i>	
Nashville warbler	<i>Vermivora ruficapilla</i>	
black-throated gray warbler	<i>Dendroica nigrescens</i>	
western tanager	<i>Piranga ludoviciana</i>	X
black-headed grosbeak	<i>Pheucticus melanocephalus</i>	
Lazuli bunting	<i>Passerina amoena</i>	
indigo bunting	<i>Passerina cyanea</i>	
green-tailed towhee	<i>Pipilo chlorurus</i>	
rufous-sided towhee	<i>Pipilo erythrophthalmus</i>	
lark sparrow	<i>Calamospiza melanocorys</i>	
white-crowned sparrow	<i>Zonotrichia leucophrys</i>	X
sage sparrow	<i>Amphispiza belli</i>	X
black-throated sparrow	<i>Amphispiza bilineata</i>	X
song sparrow	<i>Melospiza melodia</i>	
fox sparrow	<i>Passerella iliaca</i>	
chipping sparrow	<i>Spizella passerina</i>	
rufous-crowned sparrow	<i>Aimophila ruficeps</i>	
Brewer's sparrow	<i>Spizella breweri</i>	
savannah sparrow	<i>Passerculus sandwichensis</i>	
clay-colored sparrow	<i>Spizella pallida</i>	
grasshopper sparrow	<i>Ammodramus savannarum</i>	
golden-crowned sparrow	<i>Zonotrichia atricapilla</i>	
dark-eyed junco	<i>Junco hyemalis</i>	X
bobolink	<i>Dolichonyx oryzivorus</i>	

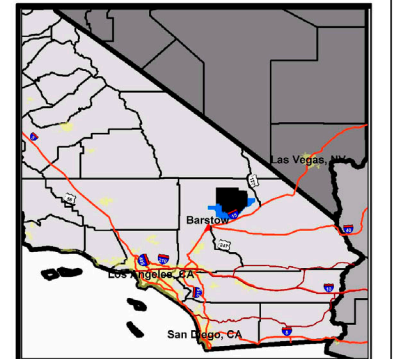
Common Name	Scientific Name	Observed within the Study Area
red-winged blackbird	<i>Agelaius phoeniceus</i>	
western meadowlark	<i>Sturnella neglecta</i>	X
yellow-headed blackbird	<i>Xanthocephalus xanthocephalus</i>	
rusty blackbird	<i>Euphagus carolinus</i>	
Brewer's blackbird	<i>Euphagus cyanocephalus</i>	X
brown-headed cowbird	<i>Molothrus ater</i>	
great-tailed grackle	<i>Quiscalus mexicanus</i>	
Bullock's oriole	<i>Icterus galbula bullocki</i>	
Scott's oriole	<i>Icterus parisorum</i>	
hooded oriole	<i>Icterus cucullatus</i>	
northern oriole	<i>Icterus galbula</i>	
house finch	<i>Carpodacus mexicanus</i>	X
Lawrence's goldfinch	<i>Carduelis lawrencei</i>	
lesser goldfinch	<i>Carduelis psaltria</i>	X
house sparrow	<i>Passer domesticus</i>	
<b><i>Mammals</i></b>		
pallid bat	<i>Antrozous pallidus</i>	X
western pipistrel	<i>Pipistrellus hesperus</i>	X
California myotis	<i>Myotis californicus</i>	X
badger	<i>Taxidea taxus</i>	X
spotted skunk	<i>Spilogale putorius</i>	
coyote	<i>Canis latrans</i>	X
kit fox	<i>Vulpes macrotis</i>	X
grey fox	<i>Urocyon cinereoargenteus</i>	
bobcat	<i>Lynx rufus</i>	
mountain lion	<i>Felis concolor</i>	

<b>Common Name</b>	<b>Scientific Name</b>	<b>Observed within the Study Area</b>
whitetail antelope squirrel	<i>Ammospermophilus leucurus</i>	X
Mohave ground squirrel	<i>Spermophilus mohavensis</i>	X
Botta's pocket gopher	<i>Thomomys bottae</i>	X
long-tailed pocket mouse	<i>Chaetodipus formosus</i>	
little pocket mouse	<i>Perognathus longimembris</i>	
Great Basin pocket mouse	<i>Perognathus parvus</i>	
desert pocket mouse	<i>Perognathus penicillatus</i>	
cactus mouse	<i>Perognathus eremicus</i>	
desert kangaroo rat	<i>Dipodomys deserti</i>	
Merriam's kangaroo rat	<i>Dipodomys merriami</i>	X
Great Basin kangaroo rat	<i>Dipodomys microps</i>	
Panamint kangaroo rat	<i>Dipodomys panamintinus</i>	
western harvest mouse	<i>Reithrodontomys megalotis</i>	
canyon mouse	<i>Peromyscus crinitus</i>	
deer mouse	<i>Peromyscus maniculatus</i>	X
southern grasshopper mouse	<i>Onychomys torridus</i>	
desert woodrat	<i>Neotoma lepida</i>	X
blacktail jackrabbit	<i>Lepus californicus</i>	X
desert cottontail	<i>Sylvilagus audubonii</i>	X
feral burro	<i>Equus asinus</i>	
Nelson's desert bighorn sheep	<i>Ovis canadensis nelsoni</i>	

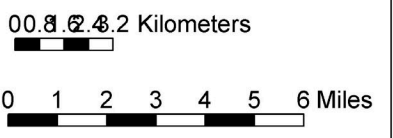


# Vegetation Association

- Study Area
- Military Boundaries
- Dry Lakes



1:140,000 Scale



Projection: UTM Zone 11  
North American Datum 1983

<p><b>Desert Sink Scrub</b></p> <ul style="list-style-type: none"> <li>Aa1, inkweed-alkali goldenbush</li> <li>Aa2, inkweed-allscale</li> <li>Aa3, inkweed-desert holly</li> <li>Aa4, inkweed-parry saltbush</li> <li>Ab1, alkali goldenbush-inkweed</li> </ul>	<p><b>Saltbush Scrub</b></p> <ul style="list-style-type: none"> <li>Ba2, spinescale-mixed saltbush</li> <li>Ba3, spinescale-budsage</li> <li>Ba4, spinescale-cooper's goldenbush</li> <li>Ba5, spinescale-cheesebush</li> <li>Ba7, spinescale-burrobush</li> </ul>	<ul style="list-style-type: none"> <li>Ba8, spinescale</li> <li>Ba9, spinescale-galleta grass</li> <li>Bb1, shadscale-burrobush</li> <li>Bb2, shadscale-allscale</li> <li>Bb3, shadscale-galleta grass</li> <li>Bb4, shadscale-winterfat</li> </ul>	<ul style="list-style-type: none"> <li>Bc1, allscale-cheesebush</li> <li>Bc2, allscale-burrobush</li> <li>Bc3, allscale-isocoma</li> <li>Bc4, allscale</li> <li>Bd1, 4-wing-galleta grass</li> <li>Bd2, 4-wing-cheesebush</li> <li>Bd3, 4-wing-peachthorn</li> <li>Bd4, 4-wing-spiry hopsage</li> <li>Bd5, 4-wing-creosote bush/ephedra</li> <li>Bf1, parry saltbush-alkali aster</li> <li>BC, saltbush creosote bush transition</li> </ul>	<p><b>Creosote Bush</b></p> <ul style="list-style-type: none"> <li>Ca1, creosote bush-burrobush</li> <li>Ca10, creosote bush-burrobush/rabbit thorn</li> <li>Ca11, creosote bush-burrobush/california jointfir</li> <li>Ca12, creosote bush-burrobush/desert holly larrea-ambrosia</li> <li>Ca13, creosote bush-burrobush/cheesebush</li> <li>Ca14, creosote bush-nevada jointfir</li> <li>Ca15, creosote bush-brittlebush</li> <li>Ca2, creosote bush-burrobush/bush buckwheat</li> <li>Ca3, creosote bush-burrobush/allscale</li> <li>Ca4, creosote bush-burrobush/galleta grass</li> <li>Ca5, creosote bush-burrobush/winterfat</li> </ul>	<p><b>Desert Wash Scrub</b></p> <ul style="list-style-type: none"> <li>Ga1a, cheesebush-goldenbush</li> <li>Ga1b, cheesebush-creosote bush</li> <li>Ga7, creosote bush-burrobush/4-wing saltbush</li> <li>Ga8, creosote bush-burrobush/goldenheads</li> <li>Ga9, creosote bush-california jointfir</li> </ul>	<ul style="list-style-type: none"> <li>Ga1c, cheesebush-shadscale</li> <li>Ga1d, cheesebush-allscale</li> <li>Ga2a, cheesebush-creosote bush/allscale</li> <li>Ga2b, cheesebush-allscale/acton daisy</li> <li>Ga3, cheesebush-california jointfir/acton daisy</li> <li>Ga4, cheesebush-4-wing/woolly brickelbush</li> <li>Ga5, cheesebush-ephedra/brickellia</li> </ul>	<p><b>Mojave Mixed Woody Scrub</b></p> <ul style="list-style-type: none"> <li>Ha1, creosote bush-mojave aster/winterfat</li> <li>Ha2, cheesebush-creosote/bush buckwheat</li> <li>Ha3, creosote bush-burrobush/cheesebush</li> <li>Ha4, creosote bush-burrobush/nevada jointfir</li> <li>Ja1, joshua tree-creosote bush/burrobush</li> <li>Ja2, joshua tree-4-wing saltbush</li> <li>Ja3, joshua tree-galleta grass</li> <li>Ja4, joshua tree-shadscale</li> </ul>	<ul style="list-style-type: none"> <li>unvegetated, unvegetated</li> </ul>
---	--	---	---	---	---	---	--	--